

Used mashine

2015

Kleve, 2015-12-01

MSK 280 + MSK Transtech

- ✓ Type of packaging: Shrink wrap
- ✓ Type of machinery: semiautomatic
(only shrink)
- ✓ Commission: 2568 (70)
- ✓ Year of constr.: 1998
- ✓ Operation: Lauer PCS 095
- ✓ Control/PLC: Siemens Simatic S5
- ✓ Freq.Inverter: Telemecanique
ATV18
- ✓ Palletsizes: EUR
Containerp. 1200 x 1000
- ✓ Max. Palletheight: ca. 1300mm
- ✓ Min. Palletheight: 300mm
- ✓ Performance: ca. 30 P/h



- ✓ Type of packaging: Shrink wrap
- ✓ Type of machinery: fully automatic
- ✓ Quantity of sizes: 2
- ✓ Commission: 1727 (70)
- ✓ Year of constr.: 1990
- ✓ Operation: conv./ OP-393 +
single row text display
(Lauer)
- ✓ Control/PLC: Siemens Simatic S5
- ✓ Freq.-Inverter: Lenze
- ✓ Palletsizes: IND / 1200 x 1000mm
- ✓ Max. Pallethight: approx. 1700 mm
- ✓ Min. Pallethight: 500 mm
- ✓ Performance: 40 P/h with 120µm

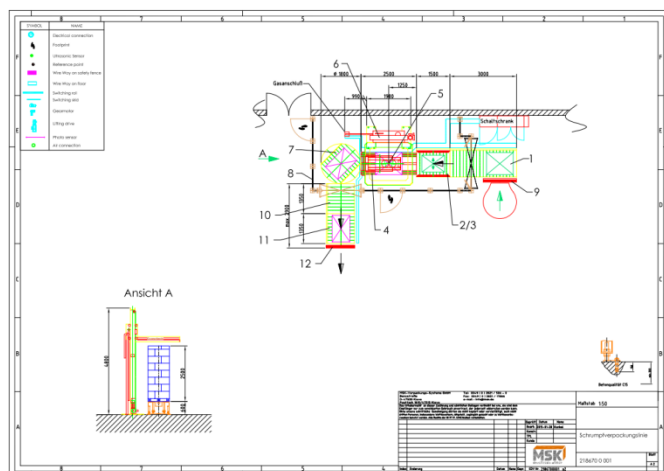


MSK 280 + MSK Transtech

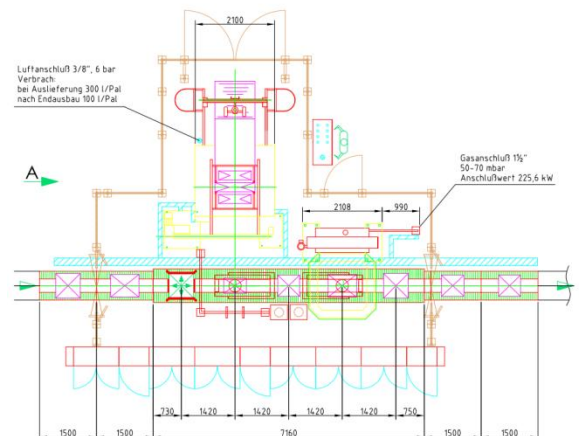
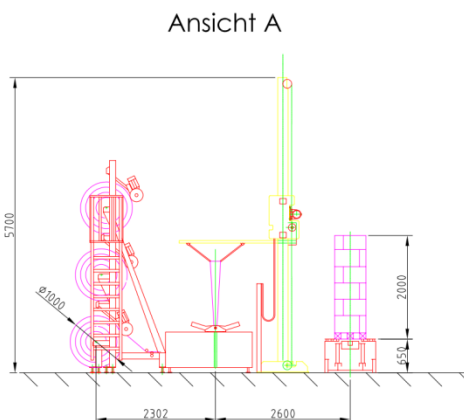
- ✓ Type of packaging: Shrink wrap
- ✓ Type of machinery: semiautomatic (only shrink)
- ✓ Commission: 2186 (70)
- ✓ Year of constr.: 1994
- ✓ Operation: Manual/OP393
- ✓ Control/PLC: Siemens Simatic S5
- ✓ Freq.Inverter: Lenze
- ✓ Palletsizes: Euro 120
Industrie
- ✓ Max. Palletheight: ca. 2500mm
- ✓ Min. Palletheight: 300mm
- ✓ Performance: ca. 30 P/h



SOLD



- ✓ Type of Packaging: shrink wrap
- ✓ Type of machinery: fully automatic
- ✓ Quantity of sizes: 3
- ✓ Commission: 2215 (70)
- ✓ Year of constr.: 1995
- ✓ Operation: MSK Emsy
- ✓ Control/PLC: Siemens Simatic S5
- ✓ Freq.-Inverter: SEW
- ✓ Palletsizes: Appliances
- ✓ Max. Pallethight: 2000 mm
- ✓ Min. Pallethight: 500 mm
- ✓ Performance: 80 P/h

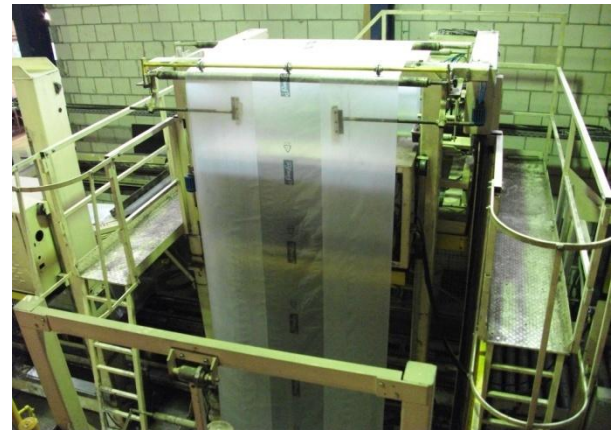


MSK Towertech

shrinkframe is separated from hood applicator



- ✓ Type of packaging: Shrink wrap
- ✓ Type of machinery: fully automatic
- ✓ Quantity of sizes: 2
- ✓ Commission-No.: 2071 (70)
- ✓ Year of constr.: 1994
- ✓ Operation: Lauer PCS 095
- ✓ Control/PLC: Siemens Simatic S5
- ✓ Freq.-Inverter: Lenze
- ✓ Palletsizes: EUR
- ✓ Max. Palletheight: 1500 mm
- ✓ Min. Palletheight: 300 mm
- ✓ Performance: 120 P/h with 100µm and a palletheight of 1100 mm



- ✓ Type of packaging: palletizing
- ✓ Type of machinery: semiautomatic

- ✓ Commission-No.: 3730 (70)
- ✓ Year of constr.: 2006

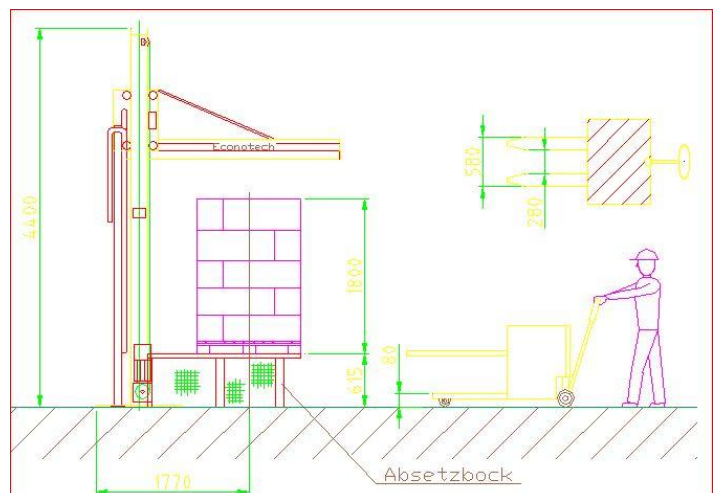
- ✓ Operation: Siemens TP 177b
- ✓ Control/PLC: Siemens Simatic S7
- ✓ Freq.-Inverter: SEW

- ✓ Palletsizes: EUR / IND
- ✓ Max. Pallethight: ca. 2800 mm
- ✓ Min. Pallethight: ca. 200 mm



MSK 280 with undershrink station

- ✓ Type of packaging: shrink wrap
- ✓ Type of machinery: semiautomatic (only shrink)
- ✓ Commission: 2521 (70)
- ✓ Year of constr.: 1997
- ✓ Operation: Siemens OP393
- ✓ Control/PLC: Siemens Simatic S5
- ✓ Freq.-Inverter: Telemecanique ATV16
- ✓ Pallet sizes: EUR/1200x1000/
1200x1200
- ✓ Max. Palletheight: ca. 2200mm
- ✓ Min. Palletheight: 500mm
- ✓ Performance: ca. 30 P/h



- ✓ Type of machinery: Compactor
- ✓ Operation: conventional
- ✓ Control : conventional
- ✓ Pressgut: foil/ Paper (sorted)
- ✓ Performance: up to 300 kg /h
- ✓ LxBxH: 1490x900x1750mm (mobil on rolls)

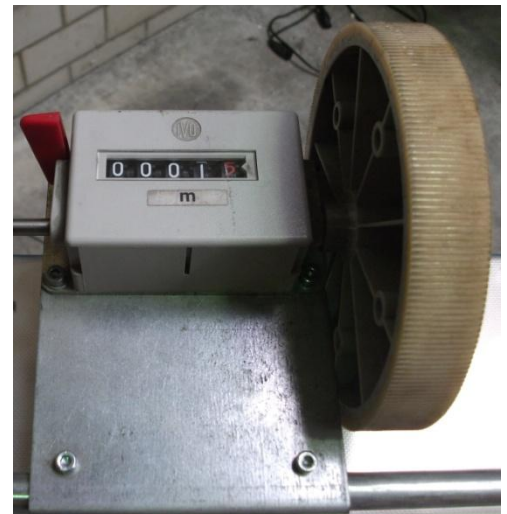


Film-welding-devices

- ✓ Type of machinery: manual handling
- ✓ Quantity of sizes: 1
- ✓ Operation: hand operated



- No warming-up time
- Acoustic signal for welding time
- Constant sealing pressure
- Integrated holder for film roll
- Built-in foil cutting device
- Controlled material consumption
- Counter of length



Conveyor sytems

- ✓ Rollerconveyor (on request)
- ✓ Chainconveyor (on request)
- ✓ Liftstations (on request)
- ✓ Cutting devices (on request)
- ✓ Turntable (on request)



Contact

Used machines / Rental Machines

Mr Ernst Winters

Tel.: +49 2821 506-268

Fax: +49 2821 506-262

Email: [**used-machines@msk.de**](mailto:used-machines@msk.de)